



65 Milton Street Ashfield, NSW



Deposit Taken by Richard Matthews

Charmingly Renovated Semi In Prime Ashfield Locale

Renovated throughout, this modern three bedroom semi is ideal for those looking to jump into the Ashfield market. Showcasing a massive open plan kitchen, living and dining area acting as the heart of this home, the ideal northern aspect combined with the polished timber floors adds to this homes character and charm. Perfectly positioned just a short walk to Ashfield station, excellent restaurants, shopping and additional transport.

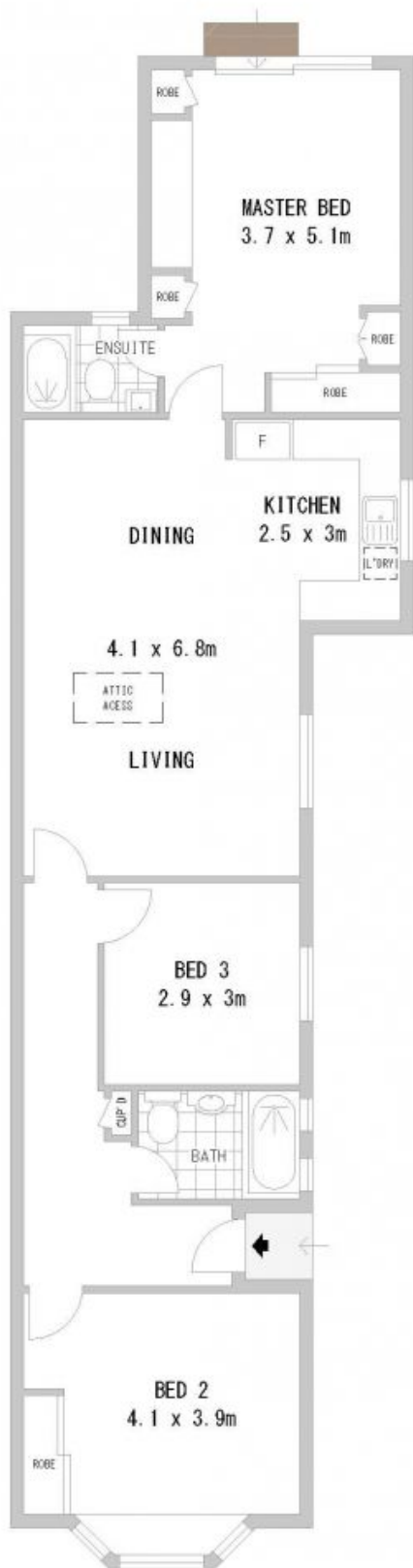
- * Ideal North facing three bedroom semi-detached
- * Open plan kitchen living and dining spaces flooded with natural light
- * Modern kitchen with gas cooking, glass splash back and modern stainless steel appliances
- * Split system heating and cooling

Price:
Bond:

DEPOSIT TAKEN BY RICHARD MATTHEWS
~~\$280,000~~ ESTATE

Zoe Meadowcroft
0413 962 016

Trina Daly



SITE PLAN



Disclaimer: Scale in metres. Indicative only. Dimensions are approximate. All information contained herein is gathered from sources we believe to be reliable. However we cannot guarantee its accuracy and interested persons should rely on their own enquiries.