




11 Flinders Road Georges Hall, NSW  4  2  2

### Luxurious Family Home & Entertaining Haven

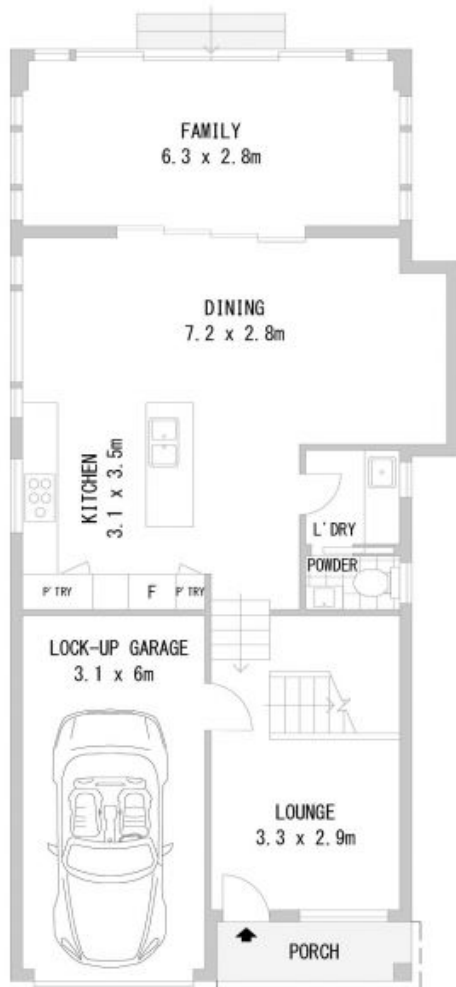
Flawlessly designed with the modern family lifestyle in mind, this home boasts a spacious functional floor plan, generous accommodation and impeccable quality inclusions throughout. Drenched in natural light and immaculately presented, this home showcases a perfect combination of living and entertaining, ideal for your family and friends to enjoy. Minutes to a myriad of amenities and close to a selection of sought after public and private schools, this prestigious home is one you have been looking for.

- \*Sundrenched Formal lounge room upon entrance featuring porcelain tiles throughout
- \*Open plan dining and kitchen flow through to separate family living
- \*Phenomenal covered entertaining timber deck overlooks the maintained lawn and garden perfect for kids to run and play

**Price:** Buyers Guide \$880,000-\$920,000  
**Inspect:** Saturday, 24th October 2020 11:00 - 11:30

**Mai Le**  
0412 884 941

**Matthew Everingham**  
0402 423 893



GROUND FLOOR



FIRST FLOOR



SITE PLAN

Disclaimer: Scale in metres. Indicative only. Dimensions are approximate. All information contained herein is gathered from sources we believe to be reliable. However we cannot guarantee its accuracy and interested persons should rely on their own enquiries.



Richard Mathews  
REAL ESTATE

**11 Finders Road, Georges Hall Georges Hall, NSW**