



2/17 Church Street Ashfield, NSW



## DEPOSIT TAKEN BY RICHARD MATTHEWS REAL ESTATE

Immaculate Courtyard Apartment in a Boutique Complex

- \* Spacious 141sqm apartment with quality timber flooring throughout
- \* Open plan living seamlessly flows out to an enormous entertaining courtyard
- \* Family sized kitchen with gas cooking, leafy outlook and ample storage
- \* Two spacious bedrooms with easy access to pristine main bathroom with both shower and bath
- \* Quality Inclusions: Internal laundry with WC and linen press and ample storage throughout
- \* Secure one car garage, well maintained security building of only 12 units

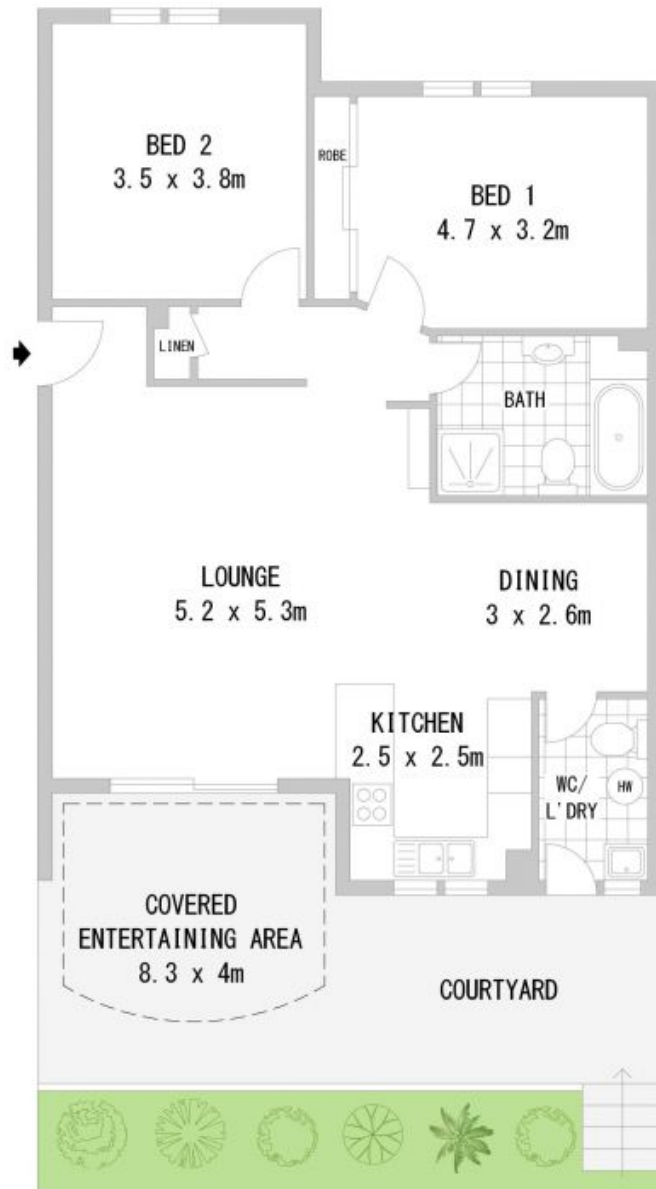
DISCLAIMER: While Richard Matthews Real Estate have taken all care in preparing this infor

**Price:**  
**Bond:**

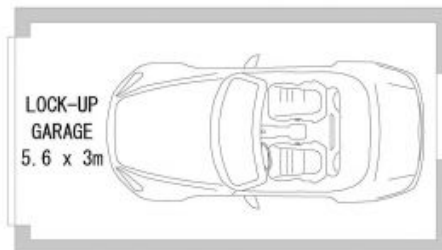
DEPOSIT TAKEN BY RICHARD MATTHEWS  
~~\$230~~ REAL ESTATE

**Regina Hong**  
0478 127 332

**Trina Daly**



**GROUND LEVEL**



**BASEMENT**



Disclaimer: Scale in metres. Indicative only. Dimensions are approximate. All information contained herein is gathered from sources we believe to be reliable. However we cannot guarantee its accuracy and interested persons should rely on their own enquiries.