



NSW 1402/7 Australia Avenue Sydney Olympic Park,



### Exceptional North East Facing Apartment with Magnificent Views

Flaunting a desirable lifestyle in a private and peaceful complex, this sophisticated and sleek oversized one bedroom apartment offers an idyllic lifestyle you simply cannot refuse. Showcasing an impressive north east facing aspect and a fresh modern floorplan, you will not be disappointed with the luxury inclusions and finishes this home as on offer. Boasting an ultra-convenient lifestyle with easy access to transport and a myriad of amenities, this designer residence features:

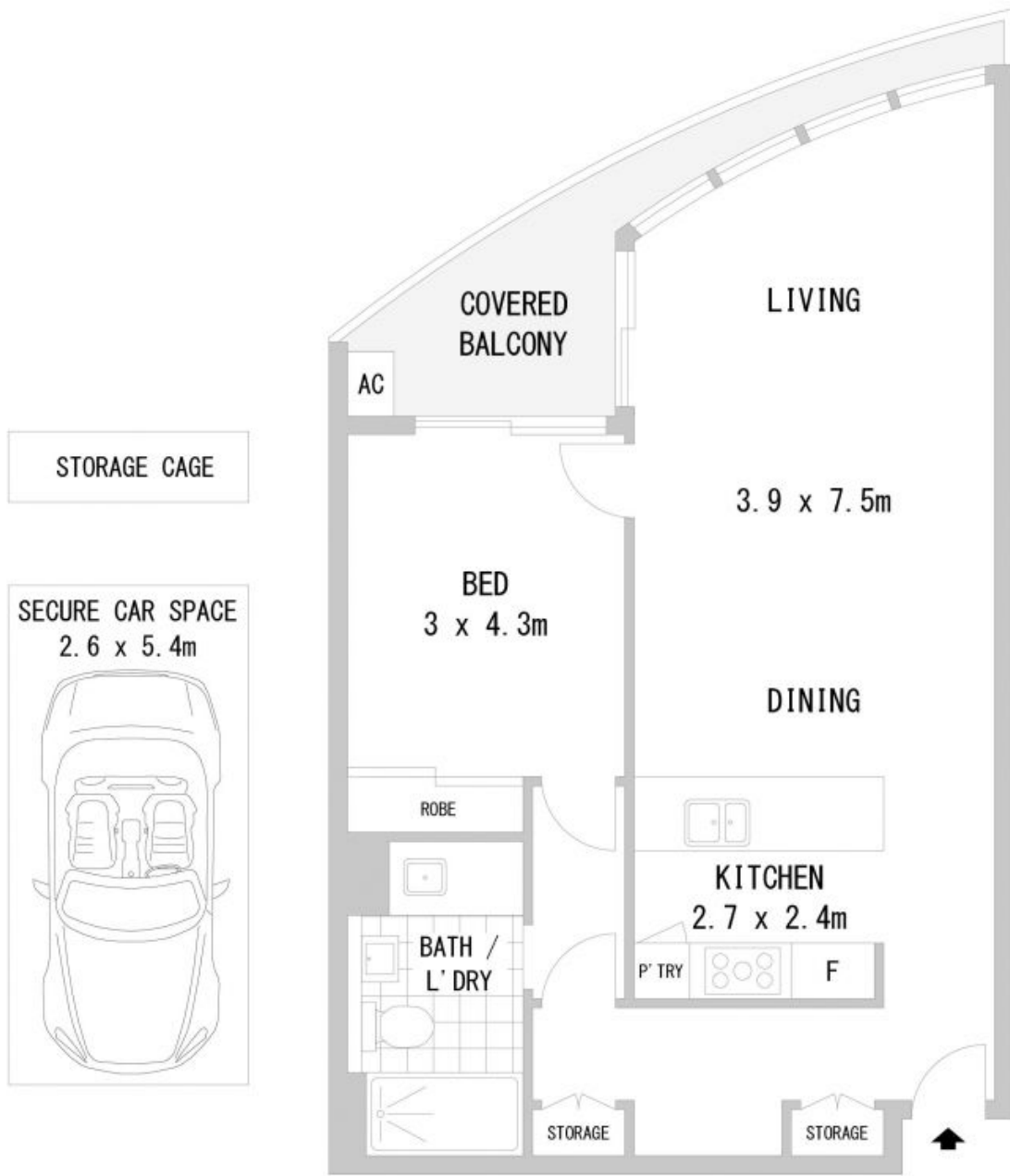
- Ideal elevated position on level 14 with gorgeous city and district views
- Stunning architectural secure complex boasting quality finishes throughout
- Sundrenched north east facing open design living, dining and kitchen

**Price:** \$570,000-\$600,000

**Hiroiyoshi Ken Miyagawa Zhimin Cherry Zeng**

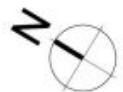
0478 017 870

0413 021 169



**BASEMENT THREE**

**LEVEL FOURTEEN**



Disclaimer: Scale in metres. Indicative only. Dimensions are approximate. All information contained herein is gathered from sources we believe to be reliable. However we cannot guarantee its accuracy and interested persons should rely on their own enquiries.

**RM** Richard Mathews  
REAL ESTATE

**1402/7 Australia Avenue, Sydney Olympic Park, NSW**