



2/55 Manson Road Strathfield, NSW



DEPOSIT TAKEN BY RICHARD MATTHEWS REAL ESTATE

North East Facing Three Bedroom Plus Study, Moments to Strathfield Station

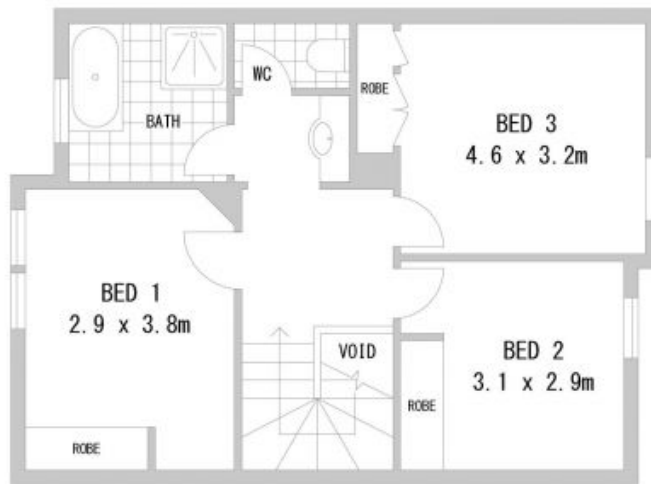
Price:
Bond:

DEPOSIT TAKEN BY RICHARD MATTHEWS
~~\$260,000~~ REAL ESTATE

- * North East Facing open plan living and dining flowing to sun drenched backyard
- * Gourmet kitchen with stone benchtop and gas cooktop
- * Ideal for the young or growing family, the investor, first home buyer
- * Bonus separate study located on the ground floor with easy access to bonus WC. Perfect for guests and in-law accommodation
- * Three huge bedrooms upstairs all with built in robes
- * Oversized storage and secure parking at basement
- * Pets are not permitted

Regina Hong
0478 127 332

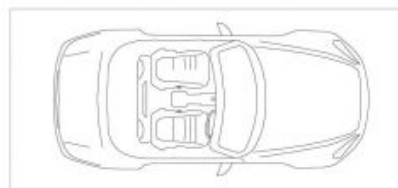
Trina Daly



FIRST FLOOR



GROUND FLOOR



SECURE CAR SPACE
 5.5 x 2.5m



STORAGE
 4.5 x 1m

BASEMENT



Disclaimer: Scale in metres. Indicative only. Dimensions are approximate. All information contained herein is gathered from sources we believe to be reliable. However we cannot guarantee its accuracy and interested persons should rely on their own enquiries.