



5/1-2 South Parade Canterbury, NSW

2 2 1

Seamless North Facing Modern Apartment in Prime Position

Set on the first level in a boutique building of only 8 apartments, this immaculate open plan apartment offers low maintenance living in an ultra-convenient location. Just a few minutes' walk to both Campsie and Canterbury shops, this residence is ideal for first home buyers, the young family, investors and those looking to downsize. Showcasing a huge open plan floor plan saturated in natural light, you will not be disappointed with the modern quality inclusions this home has to offer.

* Ideal north facing aspect with a grand 115m² on title (93m² internal and 22m² parking and storage)

* Sought after small boutique complex of only 8 apartments

* Sundrenched entertainers balcony perfect for alfresco dining

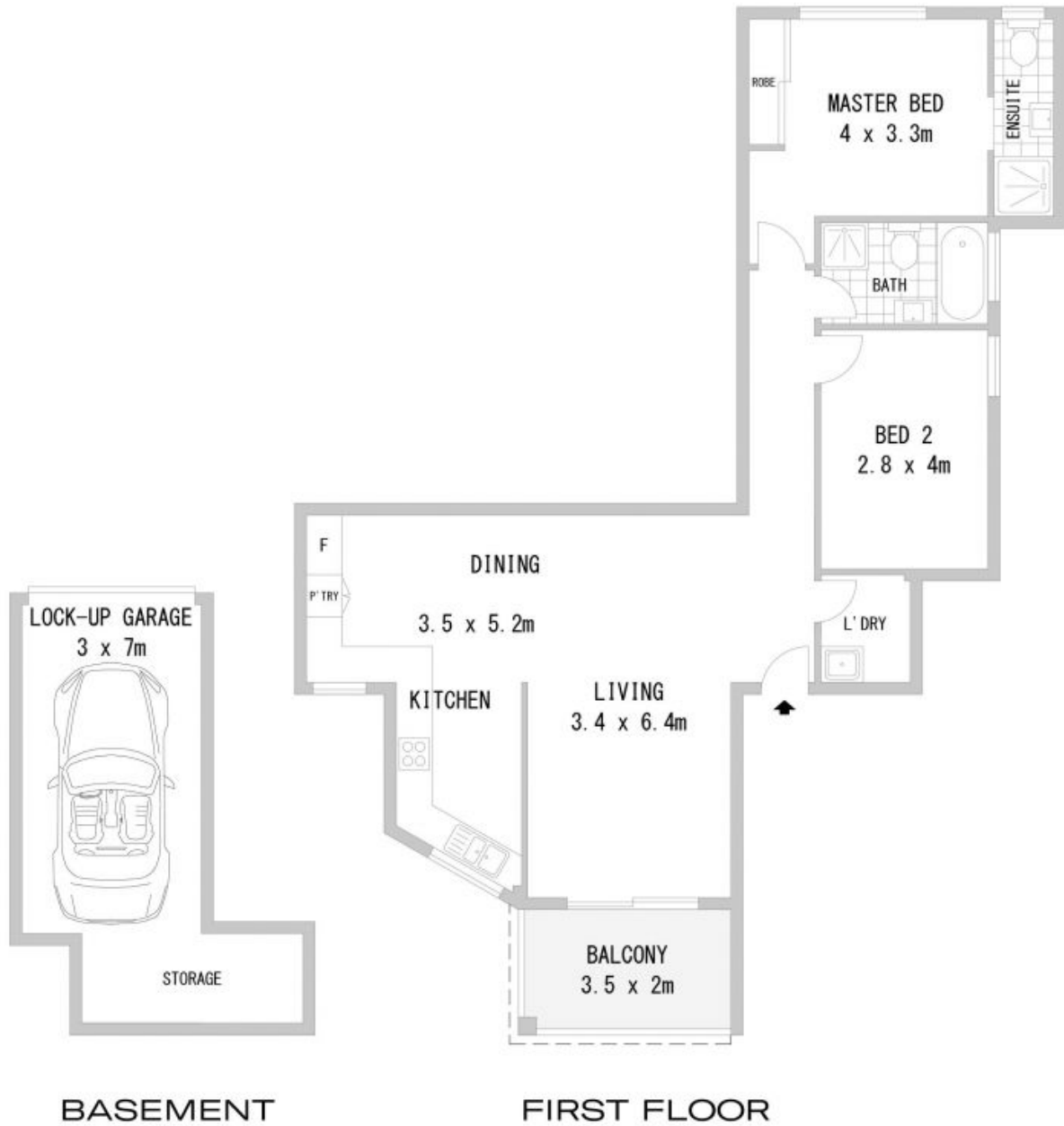
Price: Price Guide \$620,000
Inspect: Saturday, 24th October 2020 12:00 - 12:30
Auction: 2020-11-14
Details: 11:00:00

Matthew Everingham

0402 423 893

Jackson Cox

0422 264 306



Disclaimer: Scale in metres. Indicative only. Dimensions are approximate. All information contained herein is gathered from sources we believe to be reliable. However we cannot guarantee its accuracy and interested persons should rely on their own enquiries.



Richard Mathews
REAL ESTATE

55/2 South Parade, Canterbury Canterbury, NSW