



2/17 Church Street Ashfield, NSW



SOLD BY RICHARD MATTHEWS REAL ESTATE

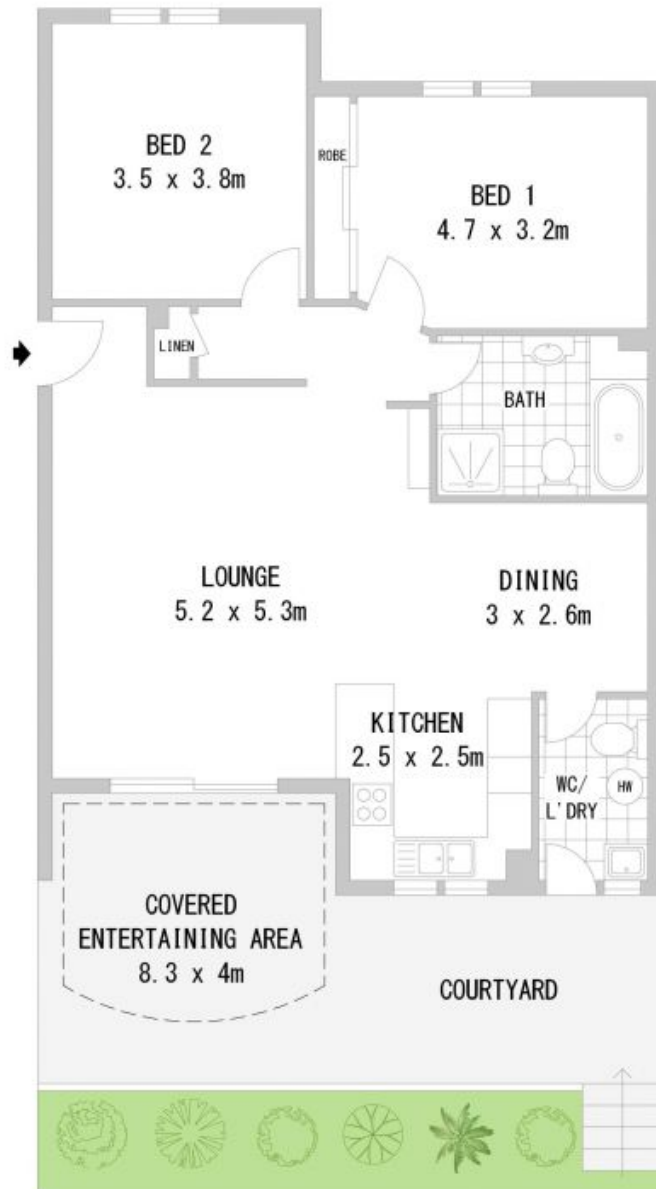
Ideally positioned in a highly sought after tree-lined location, this beautiful two bedroom apartment features a spacious floor plan with free flowing indoor/outdoor living that is suitable for a variety of lifestyles. Positioned to the rear in a small boutique complex of only 12, this immaculately presented home offers an ultra convenient and low maintenance lifestyle. Enjoy being just a short walk to local shops, great schools, Hammond Park and multiple public transport links, this premiere home features:

- * Spacious 141sqm apartment with quality timber flooring throughout
- * Open plan living seamlessly flows out to an enormous entertaining courtyard
- * Family sized kitchen with gas cooking, leafy outlook and ample storage

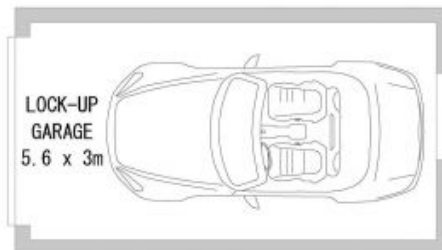
Price: \$831,000

Vivek Tailor
0481 168 516

Jackson Cox
0422 264 306



GROUND LEVEL



BASEMENT



Disclaimer: Scale in metres. Indicative only. Dimensions are approximate. All information contained herein is gathered from sources we believe to be reliable. However we cannot guarantee its accuracy and interested persons should rely on their own enquiries.