

2 President Street Croydon Park, NSW



DEPOSIT TAKEN BY RICHARD MATTHEWS REAL ESTATE

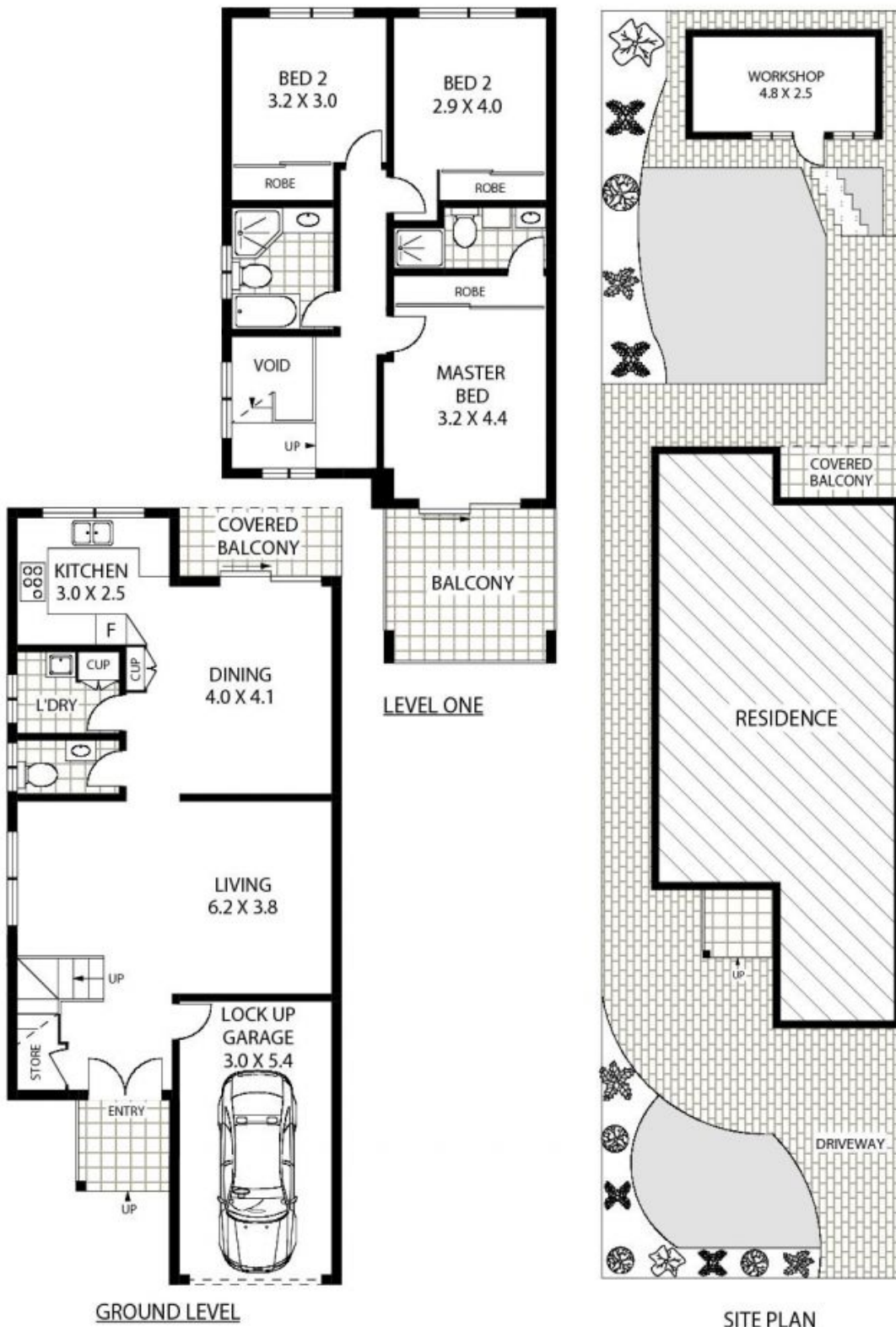
This beautifully renovated home is ready for you to move straight in and enjoy. Central to Croydon Park shopping village, Westfield Burwood, transport, highly sought schools and acres of parkland

- *3 huge bedrooms with built-ins, main bedroom with ensuite and balcony
- *Sun drenched lounge and separate dining areas with study nook
- *Dream gourmet caesar stone kitchen with stainless steel gas appliances
- *Ducted air conditioning, manicured landscaped gardens with north facing backyard
- *Lock up garage with internal access and additional off street parking

Price:
Bond:

DEPOSIT TAKEN BY RICHARD MATTHEWS
~~REAL~~ ESTATE

Richard Matthews Real Estate



2 PRESIDENT STREET

CROYDON PARK

Richard Matthews
REAL ESTATE

Floor Plan Disclaimer: Mind the Gap (MTG) floor plans / site plans are intended as an approximate guide only. No representations or warranties of any nature are given or intended and any person using this information other than as a guide should always rely on their own enquiries. Contact 1300 133 145 - www.mindthegap.com.au - Photography, Video, Drone, Interactive, Floorplans, Copywriting.



Richard Matthews
REAL ESTATE

2 President Street

Croydon Park, NSW