



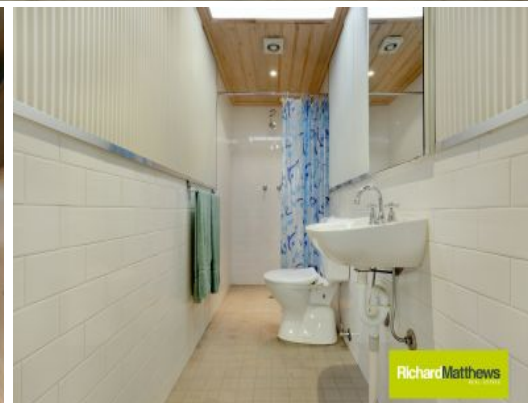
Richard Matthews  
REAL ESTATE



Richard Matthews



Richard Matthews



Richard Matthews

10 Lakemba Street Belmore, NSW

## Enormous Workshop

Situated at the rear of the block is this enormous workshop which is ideal for a wide range of uses and is suitable for manufacturing, wholesale or trades services. Within easy walking distance to Belmore Station, just some of the outstanding and unique features include

- \*245sqm approx.
- \*Factory floor single level concrete with minimum pillars
- \*High open beam roof space with natural and fluorescent lighting
- \*Double door truck loading bay with low pitch ramp to factory floor
- \*Office space that fits 2-3 people comfortably
- \*Modern kitchenette with abundant storage space
- \*Complete bathroom with shower
- \*Laundry

**Richard Bani**

0438 389 333