



28 Woodside Avenue Strathfield, NSW



DEPOSIT TAKEN BY RICHARD MATTHEWS REAL ESTATE

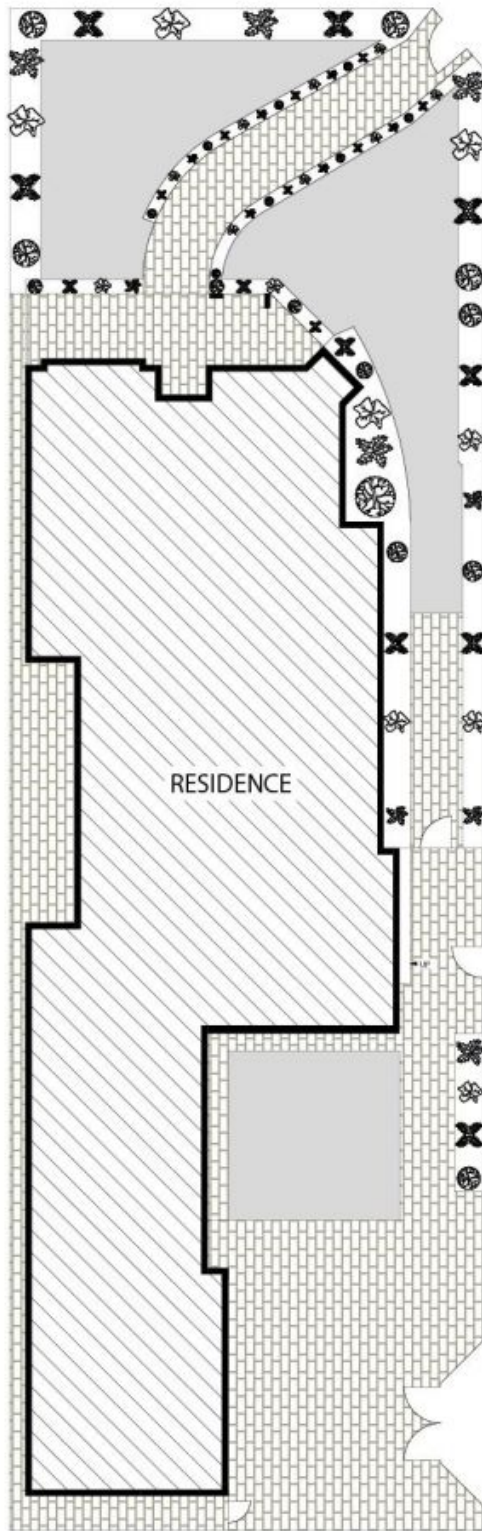
This impeccably presented family home combines a commanding blue ribbon, north facing corner location with a highly sought abundance of size and sundrenched living. Enjoying short walking distance to both Strathfield and Burwood Shopping, private schools, transport and amenities

- *3 oversized bedrooms plus study/nursery
- *Stunning open plan formal lounge and dining areas
- *Enormous rumpus/enclosed entertaining area with kitchenette
- *Granite kitchen with gas appliances off dining area
- *Additional family room flowing to immaculate landscaped gardens
- *Double lock up garage, stunning floorboards and high ceilings

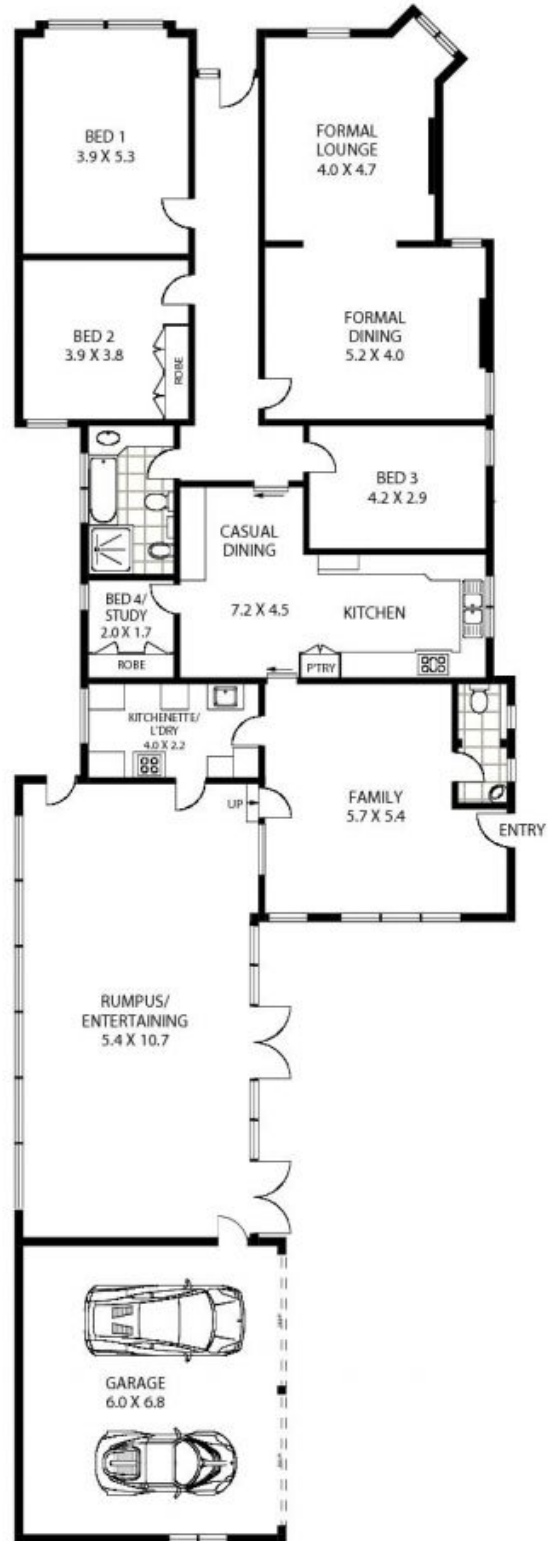
Price:
Bond:

DEPOSIT TAKEN BY RICHARD MATTHEWS
~~\$1800~~ REAL ESTATE

Laura Raneri
0402 004 520



SITE PLAN



GROUND FLOOR



28 WOODSIDE AVENUE

STRATHFIELD

RichardMatthews
REAL ESTATE

Floor Plan Disclaimer: Mind the Gap (mtg) floor plans / site plans are intended as an approximate guide only. No representations or warranties of any nature are given or intended and any person using this information other than as a guide should always rely on their own enquiries. Mind the Gap property marketing services / 1300 133 145 / Photography, Floor plans, Copywriting, Video, Online, Design / www.mindthegap.com.au



Richard Matthews
REAL ESTATE

28 Woodside Avenue

Strathfield, NSW