



11/76 Beresford Road Strathfield, NSW



DEPOSIT TAKEN BY RICHARD MATTHEWS REAL ESTATE

"Park Terraces" is a private and secure complex. This brick residence is ideally positioned opposite parkland and central to shopping village, transport, schools and all amenities.

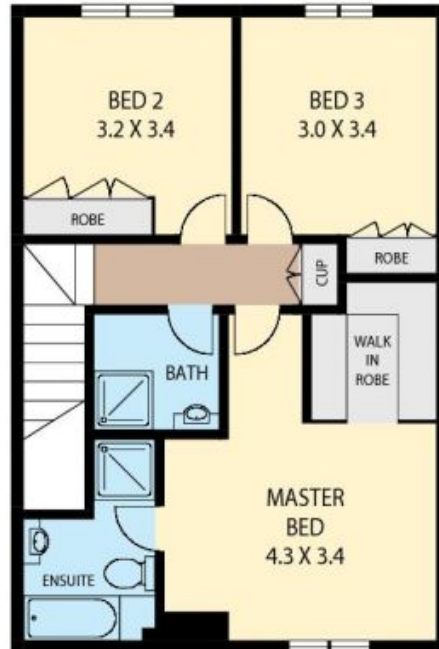
Price: \$690
Bond: \$2760

- *3 oversized bedrooms, built ins, main with walk in robe and en-suite
- *Sun-drenched open plan lounge and dining with floorboards
- *Immaculate granite kitchen with gas cooking and integrated appliances
- *3 stylish bathrooms and internal laundry
- *Entertainer's courtyard and ducted air conditioning
- *Double auto garage plus loads of storage

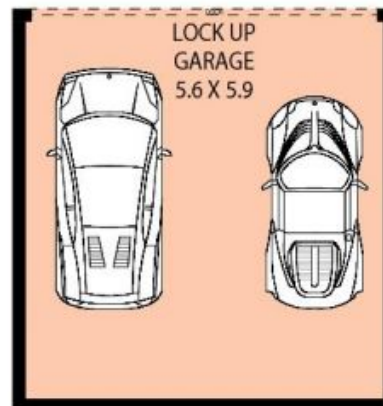
Richard Matthews Real Estate



GROUND LEVEL



LEVEL ONE



11/76-80 BERESFORD ROAD

STRATHFIELD

Floor Plan Disclaimer: Mind the Gap (mtg) floor plans / site plans are intended as an approximate guide only. No representations or warranties of any nature are given or intended and any person using this information other than as a guide should always rely on their own enquiries. mtg property marketing services - 1300 133 145 - photography, floor plans, copywriting, video, design, projects - www.mindthegap.com.au



Richard Matthews
REAL ESTATE

11/76 Beresford Road

Strathfield, NSW