

305/1 Victoria Street Ashfield, NSW



SOLD PRIOR TO AUCTION BY RICHARD MATTHEWS REAL ESTATE

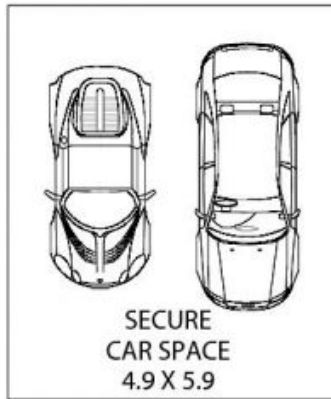
Immaculately presented and less than two years young, this stunning three bedroom apartment offers everything you desire and more. Drenched with an abundance of natural light throughout, this home is ready to impress flaunting striking panoramic views over Ashfield and even part of the CBD skyline. Presenting a fantastic functional floor plan and multiple high class finishes, this is a home that you'll need to see for yourself.

Price: \$1,230,000

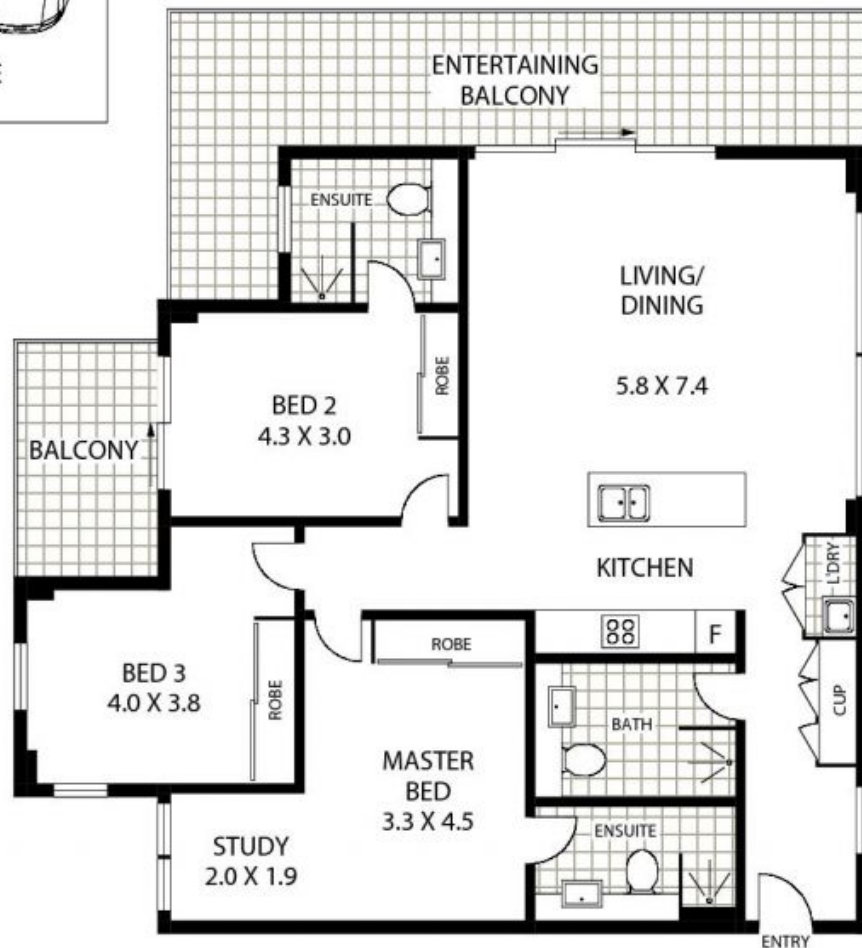
- *Open plan design with a spacious 145m² internal space - 174m² on title
- *Quality finishes throughout including hardwood timber floors and LED down lighting
- *Ducted reverse cycle heating and cooling throughout
- *Concealed laundry with sensor dryer
- *Central Location; approx. 3 minute walk to Ashfield Station, Ashfield Mall, restaurants a

Matthew Everingham
0402 423 893

Jackson Cox
0422 264 306



STORAGE
CAGE
1.7 X 1.9



LEVEL THREE



305/1 VICTORIA STREET

ASHFIELD

Richard Matthews
REAL ESTATE

Floor Plan Disclaimer: MTG Media floor plans / site plans are intended as an approximate guide only. No representations or warranties of nature are given or intended and any person or company using this information other than as a guide should always rely on their own enquiries.



Richard Matthews
REAL ESTATE

305/1 Victoria Street

Ashfield, NSW