



24/135-139 Croydon Avenue Croydon Park, NSW



## Move Straight In & Enjoy

This impeccably presented apartment is located in a highly sought complex surrounded by lush gardens. Built in a time where the focus was on absolute comfort and solid construction, this rare gem is simply perfect for both the first home owner and astute investor

**Price:** \$607,000

- \*2 generous bedrooms, main with built in robes
- \*Sundrenched open plan lounge and dining areas
- \*Generous living flowing to north facing entertainer's balcony
- \*Bonus of lock up garage even though you may feel you don't need a car
- \*Stroll to the vibrant cosmopolitan village, transport, parkland and enjoy all the amenities

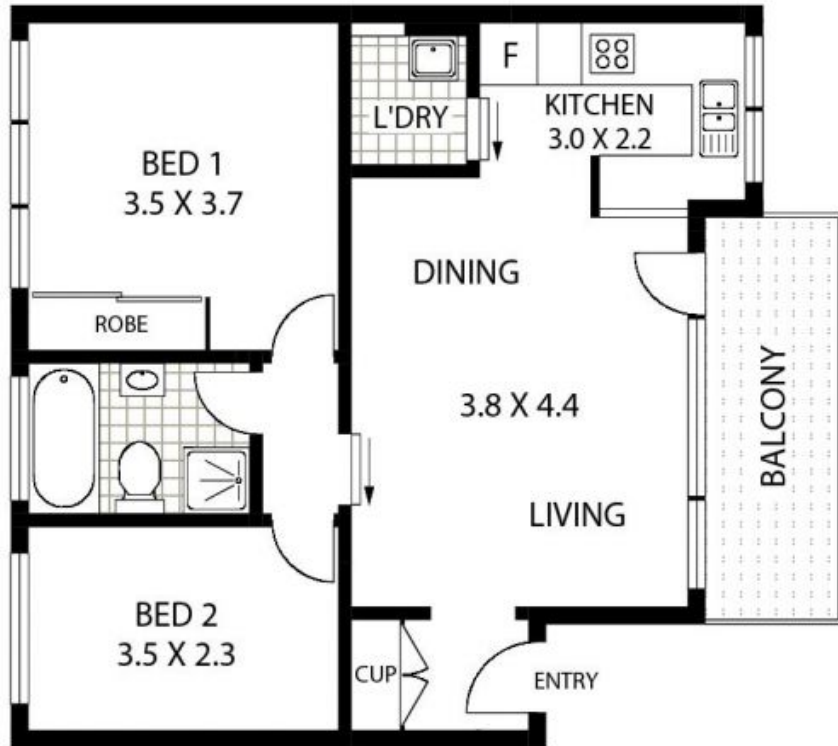
**Richard Bains**

0438 389 333



CAR SPACE  
2.6 X 5.4

GROUND LEVEL



LEVEL ONE



24/135-139 CROYDON AVENUE

CROYDON PARK

**Richard Matthews**  
REAL ESTATE

**Floor Plan Disclaimer:** Mind the Gap (MTG) floor plans / site plans are intended as an approximate guide only. No representations or warranties of any nature are given or intended and any person using this information other than as a guide should always rely on their own enquiries. Contact: 1300 133 145 - [www.mindthegap.com.au](http://www.mindthegap.com.au) <<http://www.mindthegap.com.au/>> - Photography, Video, Drone, Interactive, Floorplans, Copywriting.



**Richard Matthews**  
REAL ESTATE

24/135-139 Croydon Avenue

Croydon Park, NSW