



204/432 Liverpool Road Strathfield South, NSW



1



1



1

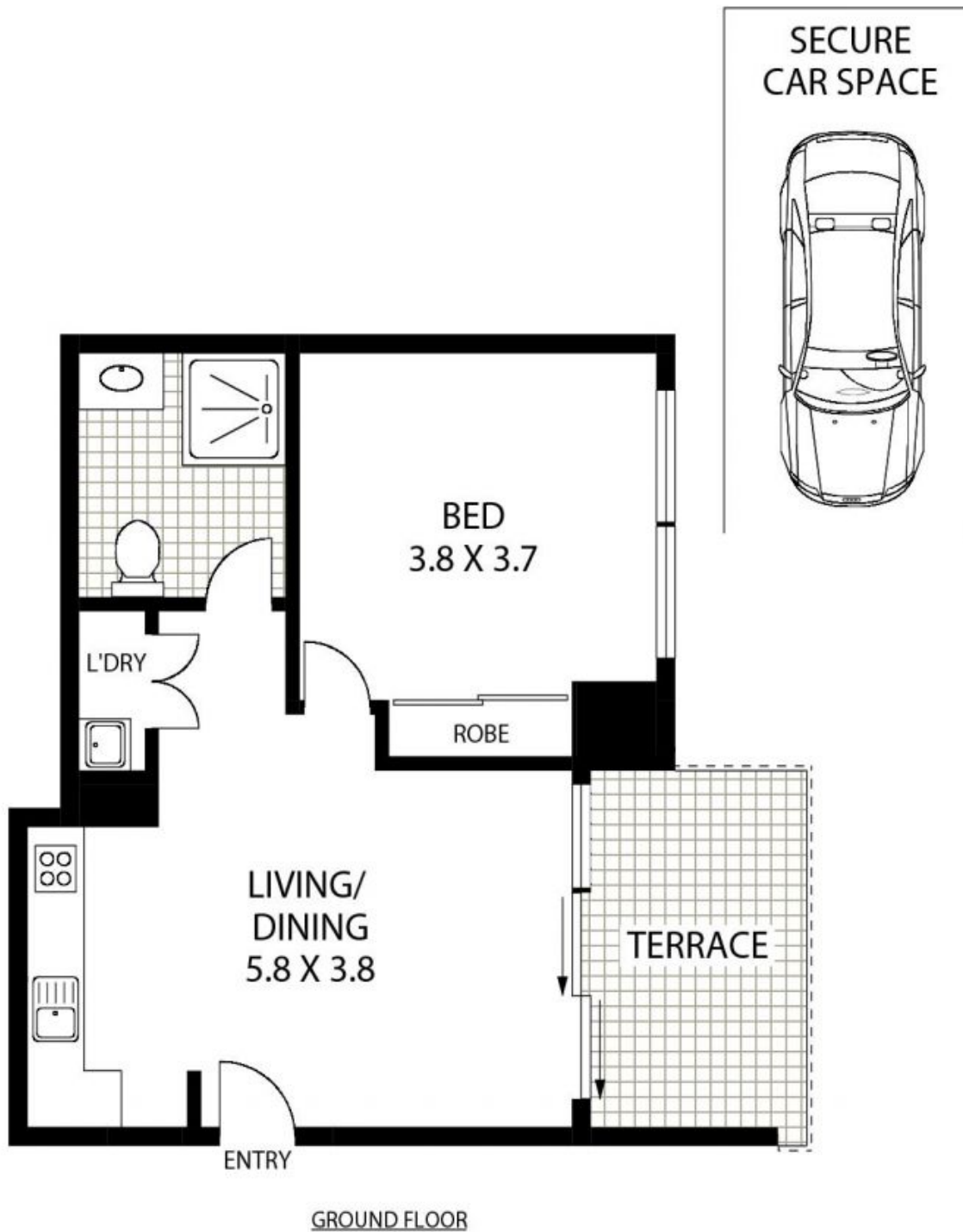
3 SOLD IN A MATTER OF WEEKS BY RICHARD MATTHEWS REAL ESTATE!!!

Boasting an abundance of natural light and enjoying a dream location is this selection of two stunning brand new apartments. Ideal for both the owner occupier and astute investor, features include

Price: \$538,000

- *1 oversized bedroom with built ins
- *Beautifully air conditioned open plan lounge and dining areas
- *Caesar Stone gas kitchen with European appliances and soft close drawers
- *Sundrenched entertainer's terrace and balconies off main bedroom and living area
- *Bonus of security car space, internal laundry and loads of storage
- *With transport at your door step, stroll to shops, schools and parkland

Richard Bains
0438 389 333



7/432 LIVERPOOL ROAD

STRATHFIELD SOUTH

Richard Matthews
REAL ESTATE

Floor Plan Disclaimer: Mind the Gap (mtg) floor plans / site plans are intended as an approximate guide only. No representations or warranties of any nature are given or intended and any person using this information other than as a guide should always rely on their own enquiries. Mind the Gap property marketing services / 1300 133 145 / Photography, Floor plans, Copywriting, Video, Online, Design / www.mindthegap.com.au



Richard Matthews
REAL ESTATE

204/432 Liverpool Road

Strathfield South, NSW