



25a Wallis Avenue Strathfield, NSW



SOLD! A MASSIVE \$500,000 ABOVE RESERVE PRICE

SOLD! A MASSIVE \$500,000 ABOVE RESERVE PRICE

Positioned in one of the area's highly sought locations and surrounded by luxurious homes is this full brick family residence offering a rare opportunity to secure a tremendously affordable home in Strathfield. Simply live now & build later

Price: \$1,900,000

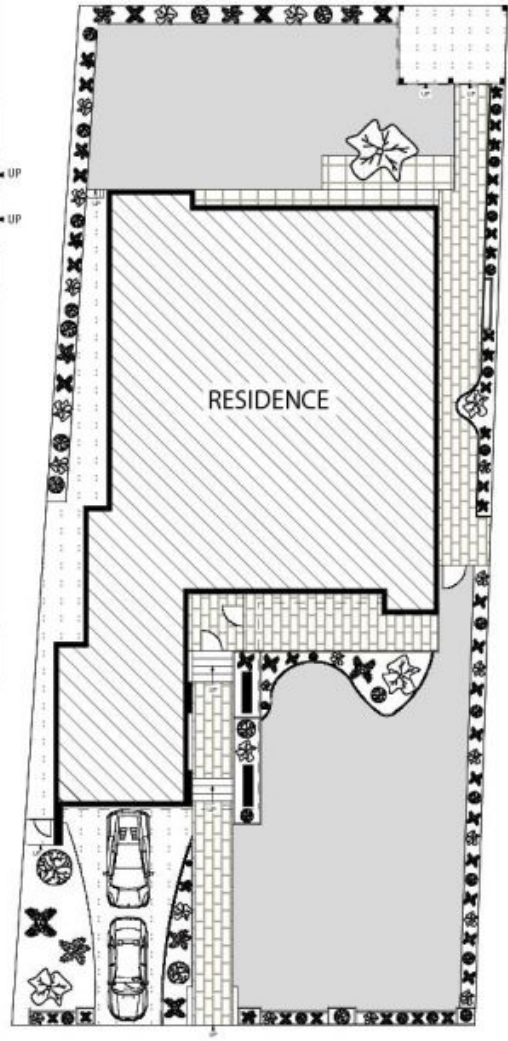
- *3 oversized bedrooms, built-ins & ensuites
- *Sun-drenched formal lounge & dining areas with huge balcony
- *Large kitchen, loads of storage & 2 tiled bathrooms
- *Spacious family room flowing off a dreamy enclosed courtyard
- *Double auto garage plus additional off street parking
- *Set on an immaculate 683sqm with a stunning 57ft frontage

Richard Baini
0438 389 333

Matthew Everingham
0402 423 893



GROUND FLOOR



SITE PLAN



25A WALLIS AVENUE

STRATHFIELD

Richard Matthews
REAL ESTATE

Floor Plan Disclaimer: Mind the Gap (mtg) floor plans / site plans are intended as an approximate guide only. No representations or warranties of any nature are given or intended and any person using this information other than as a guide should always rely on their own enquiries. Mind the Gap property marketing services / 1300 133 145 / Photography, Floor plans, Copywriting, Video, Online, Design / www.mindthegap.com.au

RM Richard Matthews
REAL ESTATE

25a Wallis Avenue

Strathfield, NSW